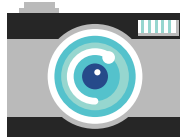


# TEEN PHOTO SCAVENGER HUNT



Find four of the objects/landmarks from the list of clues below, snap a pic of each, and get a prize! Post your photos on the MCPL Teen Services Discord server. Not on Discord? Visit [mcpl.info/discord](https://mcpl.info/discord) to receive an invite link to join the server.



## Find a pedestrian bridge over Campus River (formerly known as Jordan River)

- Outside of campus, much of the river is routed underground through a culvert, resurfacing southwest of campus at the corner of First St. and Walnut St.
- The Jordan River was named after former IU president David Starr Jordan, who served in the 1880s. Jordan was a supporter of eugenics and forced sterilization.
- In 2020, IU president Michael McRobbie responded to pressure from students and faculty to remove the Jordan name from all locations on the Bloomington campus.



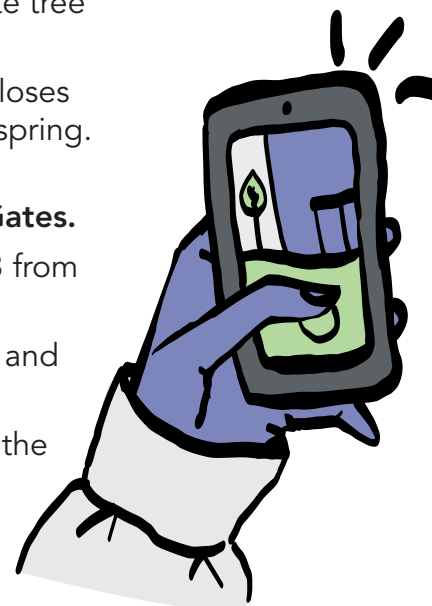
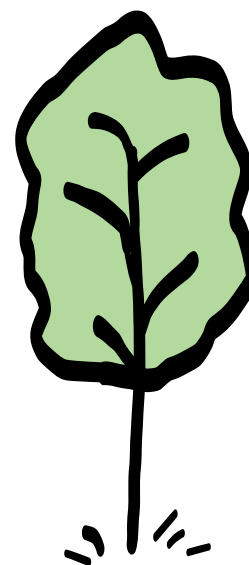
## Identify a bald cypress tree in Dunn Meadow

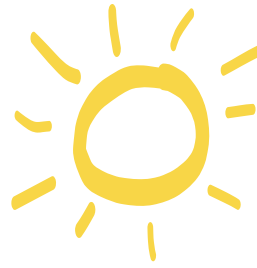
- The bald cypress tree is known for its soft, feathery foliage.
- In 1963, the bald cypress was designated as the state tree of Louisiana.
- Although the bald cypress is a cone-bearing tree, it loses its needles every winter and grows new ones in the spring.



## Find Dunn's Woods, the wooded area near Sample Gates.

- This wooded area of campus was purchased in 1883 from Moses Dunn.
- IU's main building in Seminary Square burned down and this 20-acre parcel was part of the "new campus."
- When purchased by the university, this area marked the eastern edge of Bloomington.





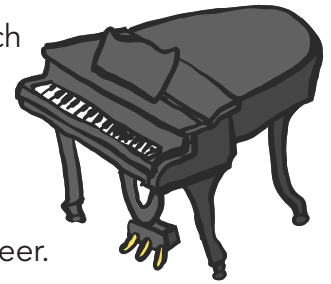
### Find a brick street on campus

- Brick streets were some of the earliest streets paved in the United States.
- Brick streets can be better for the environment by allowing water to absorb into the ground more easily than a road paved with asphalt.



### Find a statue by artist Jerald Jacquard (1937–2020)

- Jacquard was a professor of art at IU-Bloomington for more than 25 years.
- He is known for his large, modern outdoor sculptures, which can be found in several midwestern cities.



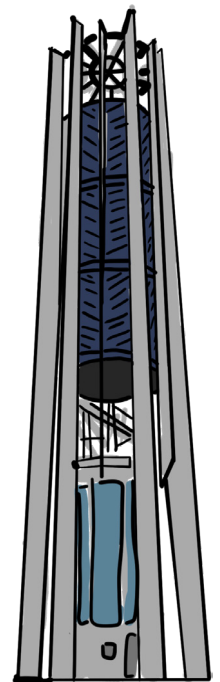
### Find the Hoagy Carmichael Statue

- Hoagy Carmichael composed several hundred songs, including fifty that achieved hit-record status during his career.
- He was born and raised in Bloomington, and composed some of his first hits here.
- He was named after a circus troupe that lived with his mother while she was pregnant with him.



### Showalter Fountain Fish next to the IU Auditorium and the Lilly Library

- The fish have been stolen a few times, most recently in 2010.
- Today there are trackers in the fish which alert the police if they are disturbed.
- The statue depicts the Birth of Venus.



### Locate the IU Bell Tower near the Herman B Wells Library

- Called a Grand Carillon, IU's bell tower has 65 bells, and there are less than 30 grand carillons in the world.
- The Carillon was upgraded with additional bells and moved to its current location as part of IU's bicentennial.
- "The four new bells are engraved with quotes from four women writers: the 6th century B.C Greek poet Sappho, the 12th century German nun polymath Hildegard of Bingen and American poets Emily Dickinson and Maya Angelou."